

SCA Obbola Sweden PM1- Replaces Papertech WebVision system with Millsight.

During late December 2008, SCA upgraded their existing ten (10) camera web monitoring (WMS) system from Papertech to a fifteen (15) camera Millsight system.

Millsight had already supplied replacement cameras on some of the existing paper machine positions; all the new positions are using the latest pinhole cameras and lights.

During a planned machine shut, the existing WebVision interface cabinet was shut down, stripped and rebuilt with Millsight computers and associated hardware. During the same shut, seven (7) new cameras and lights were also installed.

The old quad processors for 'live-view' of camera images on dedicated displays in the control room were removed, as this feature is now driven from the mRec computers. The old control room CRT real time display monitors were also replaced with modern flat screens.

Full operator and maintenance training was given, and system was handed over on-time.

Here are some pictures of the interface cabinet 'before and after'.



SCA Obbola at night

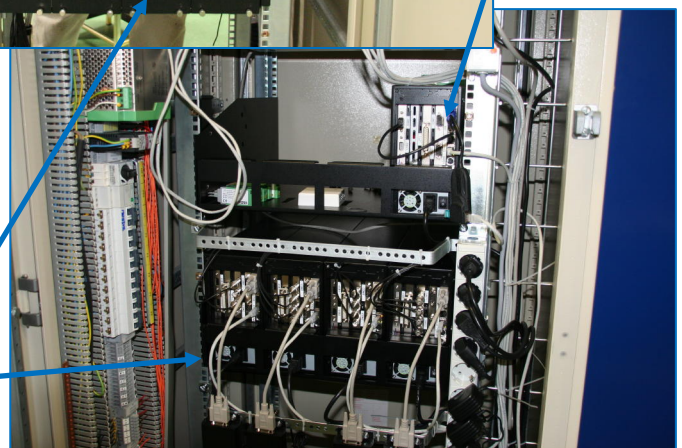


Cabinet before we started



New mMaster computer

Old Quad units



New mRec computers

New computers and software installed